

LAKE AVENUE RETAIL / RESTAURANT



2389-2395 N. LAKE A

Suite 2389: Suitable for retail
Sq. Ft. + 390 Sq. Ft. attached

Suite 2391: Suitable for restaur
Approx. 2,58

Suite 2395: Suitable for retail
Approx. 4,70

Total: 10,452 R.S.F.

Parking: Ample parking for re
Price for all above: \$1.95 per

Excellent Visibility! Within Altadena's North Lake Shopping District! Close to Altadena

For information, please contact: 626.585.4321

Norm Sauve: nsauve@sauveriegel.com

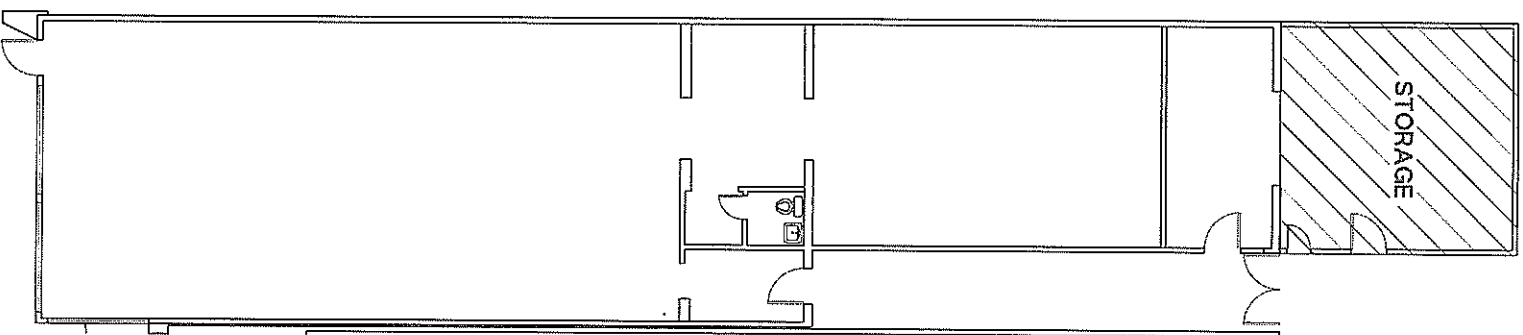
Bob Riegel: bob.riegel@sauveriegel.com

www.sauveriegel.com

Sauvé Riegel
Commercial Real Estate

12 South Raymond Avenue, Suite A ■ Pasadena, California 91105
626. 585.4321 fax 626.683.3990 ■ www.sauveriegel.com

2389 NORTH LAKE AVE.
ALTADENA, CALIFORNIA



AVAILABLE

-2,768 S.F.
STORAGE - 390 S.F.
TOTAL -3,159 S.F.

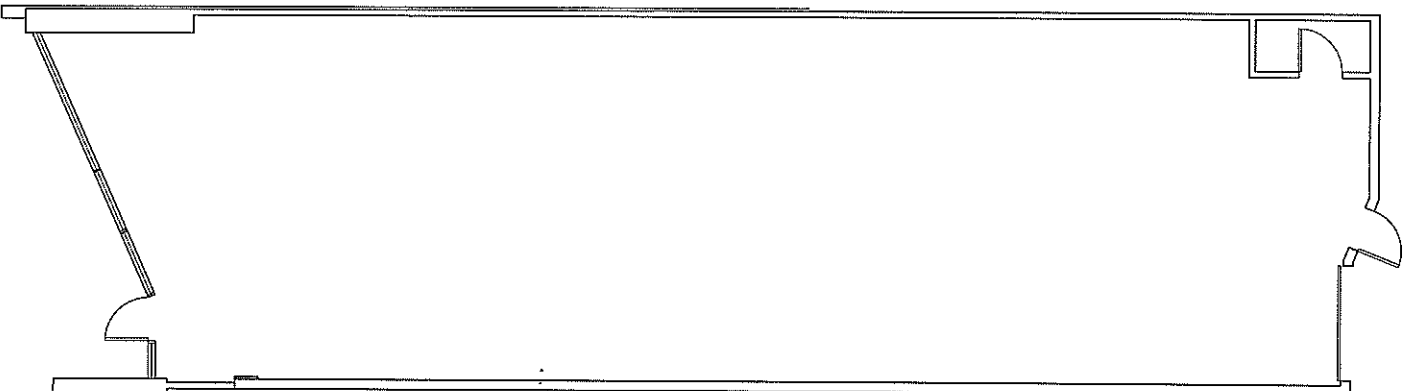


NOVEMBER 27, 2007



CADTRONICS
(949) 251-1710

**2391 NORTH LAKE AVE.
ALTADENA, CALIFORNIA**



**VACANT
2,589 S.F.**



NOVEMBER 27, 2007



**CADTRONICS
(949) 281-1710**

