

FOR LEASE IN OLD PASADENA NEW MAIN ROAD RETAIL SPACE



155 WEST GREEN STREET PASADENA, CALIFORNIA 91105

- ✦ APPROX. 1,000 RENTABLE SQ.FT.
- ✦ STREET PARKING
- ✦ NEARBY PARKING STRUCTURES
- ✦ "SHELL" FINISH TO INCLUDE:
 - HVAC UNIT
 - POWER DISTRIBUTION BOARD
 - RESTROOM CONNECTIONS
- ✦ 5-YEAR TERM



For additional information:

Leon Saroff
leons@sauveriegel.com

Bob Riegel
bob.riegel@sauveriegel.com

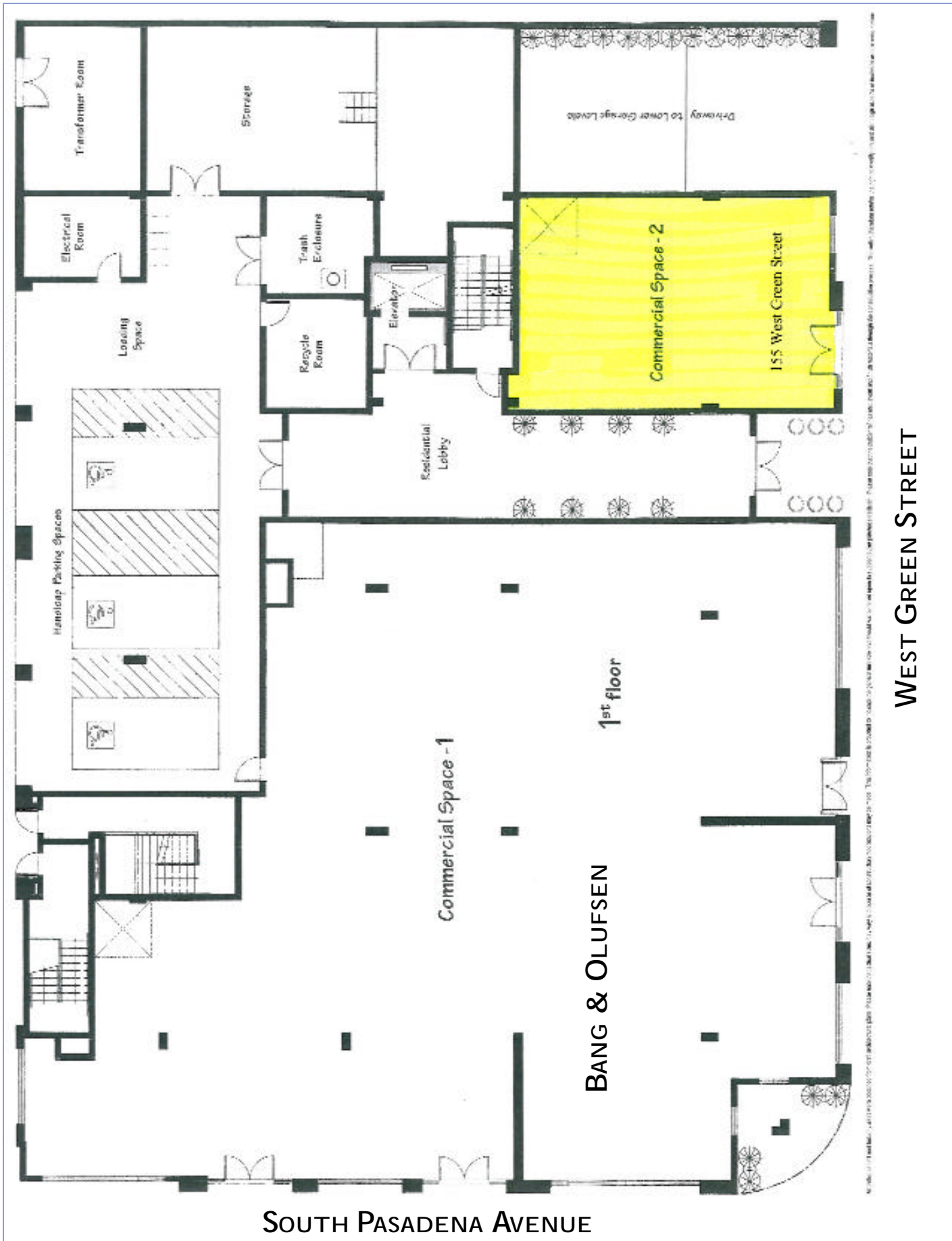
Sauvé Riegel
Commercial Real Estate

626.585.4321
12 So. Raymond Avenue, Suite A
Pasadena, California 91105
www.sauveriegel.com
626.683.3990 fax

NEARBY UPSCALE
RETAILERS
AND
RESTAURANTS



BANG & OLUFSEN
TIFFANY & Co.
KENNETH COLE
ABERCROMBIE & FITCH
H & M
POTTERY BARN
GUESS
BARNES & NOBLE
BANANA REPUBLIC
DELACEY'S CLUB 41
TWIN PALMS
APPLE COMPUTER STORE
CRATE & BARREL
VILLA SORRISO
DIESEL
CHICO'S
URBAN OUTFITTERS
SUR LA TABLE
GAP
BURKE WILLIAMS SPA
RESTORATION HARDWARE
PAPYRUS
CHEESECAKE FACTORY
VICTORIA'S SECRET
FOREVER 21
THE MELTING POT
J. CREW
LA LUNA NEGRA



The information contained herein has been obtained from sources which are deemed reliable. While we have no reason to doubt its accuracy, we do not guarantee it and assume no liability for any inaccuracies or omissions.